

Brought to you by sewingideas.com



Creative Vision Blazer



Shopping List:

- Your favorite jacket pattern
- Fabric, lining and interfacing according to the pattern recommendations
- Purchased piping or cording and fabric to make your own piping
- Construction thread to match your fabric
- Dressmaker Shears
- Pins
- PFAFF® CREATIVE VISION™ sewing and embroidery machine
- PFAFF® Seam Guide Foot 820772-096
- PFAFF® Piping Foot 820532-096
- Creative Deluxe Hoop (360mm x 200mm)
- Embroidery design #020.vp3 from CREATIVE VISION™
- Robison Anton 40wt Rayon Embroidery thread – 5 colors to coordinate with your fabric
- YLI Soft Touch Bobbin Thread
- Inspira Tear Away Stabilizer 20" x 14"

Creative Vision Blazer

Shopping List:

- Your favorite jacket pattern
- Fabric, lining and interfacing according to the pattern recommendations
- Purchased piping or cording and fabric to make your own piping
- Construction thread to match your fabric
- Dressmaker Shears
- Pins
- PFAFF® CREATIVE VISION™ sewing and embroidery machine
- PFAFF® Seam Guide Foot 820772-096
- PFAFF® Piping Foot 820532-096
- Creative Deluxe Hoop (360mm x 200mm)
- Embroidery design #020.vp3 from CREATIVE VISION™
- Robison Anton 40wt Rayon Embroidery thread – 5 colors to coordinate with your fabric
- YLI Soft Touch Bobbin Thread
- Inspira Tear Away Stabilizer 20" x 14"

PFAFF®

Preparation:

1. Follow the instructions on your pattern to layout and cut your fabric, lining and interfacing.
2. Transfer all pattern markings.
3. Apply interfacing to the appropriate pieces according to the manufacturer's instructions.

Tips for Interfacing:

When making tailored garments, interfacing is the key to obtaining professional results. There are many different kinds of stabilizer available today, both fusible and sew-in. For best results, you should select an interfacing that is slightly lighter weight than your fashion fabric. To ensure that your garment retains its shape, apply interfacing on the whole front piece, the upper collar and all hems. Follow the manufacturer's instructions for fusing the interfacing to the fabric. Holding the iron still for the recommended time will ensure a permanent bond.

Construction and Embroidery:

1. If using a fitted pattern, it will be necessary to assemble the left jacket front before you can embroider.
2. Set up your CREATIVE VISION™ for sewing; thread the machine top and bobbin with construction thread to match your fabric, snap on the Seam Guide Foot and select straight stitch.
3. Sew the left front pieces together as detailed in the pattern.
4. Set up your CREATIVE VISION™ for embroidery; attach the embroidery unit and calibrate, select design # 020.vp3 built in on your machine, insert a bobbin wound with YLI Soft Touch Bobbin thread and thread with Robison Anton 40wt rayon embroidery thread – choosing the first color of the design.
5. Position embroidery as desired on the left jacket front; embroider, following the prompts on your CREATIVE VISION™.
6. When embroidery is complete, remove any excess stabilizer and continue with jacket assembly.
7. Reset your CREATIVE VISION™ for sewing as in step #5.
8. Sew jacket fronts to the back at the side seams, leaving the shoulder seams open. Now you are ready to add the piping.

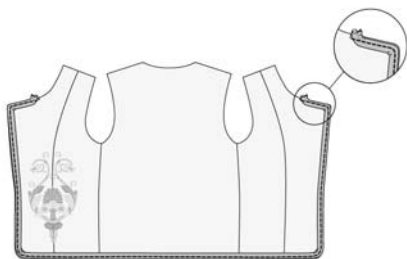
Make your own Piping:

1. Cut bias or crosswise grain strips, wide enough to cover the cording plus seam allowance. Cut enough strips for the length of piping required, plus a little extra. Seam the strips together using a diagonal seam.
2. Steam cotton cording to pre-shrink before making the piping.
3. Snap on the Piping Foot.
4. Lay the cording on the wrong side of the fabric and wrap the fabric over the cord.
5. Place the fabric and cord under the Piping Foot with the cord in the groove on the underside of the foot.
6. Stitch. The groove will guide the cord so the fabric covers evenly.

Tip: When sewing piping into a seam, adjust the needle position to the left one position so your new stitching is just inside the first row, hiding your original stitches.

Piping on Collar and Lapel:

1. Use a soft piping/cording.
2. Pin the piping along the seam line of the upper collar. Stitch, using the piping foot.
3. Place the under collar and upper collar right sides together, pin in place. Move the needle one position to the left, stitch around three sides of the collar.
4. Sew the piping around the edge of the front piece, starting and stopping at the marking for placing the collar.
5. Continue to sew the collar and lapel according to instructions in your sewing pattern.



Finish:

1. Use the pattern's instruction sheet to finish the jacket including lining, hems, buttonholes, buttons, etc.